

KYN96-12 (AMS) Metal-clad Switchgear

Summary

KYN96-12(AMS) model metal enclosed switchgear is developed by Xi'An HV Apparatus Research Institute. The complete type test have been approved at National Center for Quality Supervision & Testing of HV Apparatus, and provide integrated control and protection measurement for electric power plant, motor, power transformer, capacitor and distribution circuit etc.

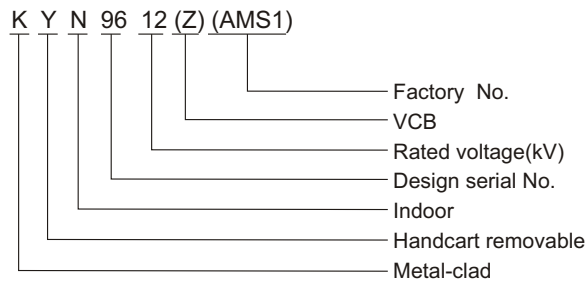
The rated voltage is 12kV, rated current is 630~3150A. AMS is equipped with VHY1-12 or VS1-12 circuit breaker, AMS is a indoor equipment used in distribution station such as industrial enterprise, high building, airport, harbour, and bus station etc. It conforms to IEC62271-200 & GB3906 3~35kV AC Metal Enclosed Switchgear, DL/T404 The Order Technical Terms of Indoor AC HV Switchgear and VDE, IEC standards.



Ambient condition

1. Ambient temperature: -15°C~40°C;
2. Altitude: ≤1000m;
3. Relative humidity: daily average ≤95%, monthly average ≤90%;
4. Earthquake intensity: ≤8 degree;
5. Applicable occasions should be free from inflammable, explosives severe vibration.

Model



Structure feature

1. High reliability

HV compartment and LV compartment are separated to limit the emergency at local part. Selection of rapidly closed earthing switch, busbar is wrapped by shrinkable material. Section of high reliability VHY1-12 or VS1-12 circuit breaker and designed with working position, testing position and drawout position. Operate to circuit breaker and earthing switch normally when the door is closed.

2. High security

The switchgear has many kinds of protective measures, such as mechanical interlock and five protection. Prevent from pulling and pushing hand cart with load and closing the earthing switch with electricity, prevent from making circuit breaking on occasion of opening and closing, prevent from entering into live isolation. Equipped with fixed position and interlock device at working and testing position inner panel, the circuit breaker is able to remove only on open position. The earthing switch adopts manual operation with open-closed position indicator. Install mechanical interlock on link rod of operation mechanism, to interlock with circuit breaker and cable compartment door, additional of equipping with locking electromagnet. Adopt metal safety shutter to keep security even if draw out circuit breaker. Protective grade is IP 4X, there is a window on the plate of circuit breaker and cable compartment.

3. High adaptability

The cable compartment is able to contain two pairs of cables. It can be equipped with standard CT, relay and meters.

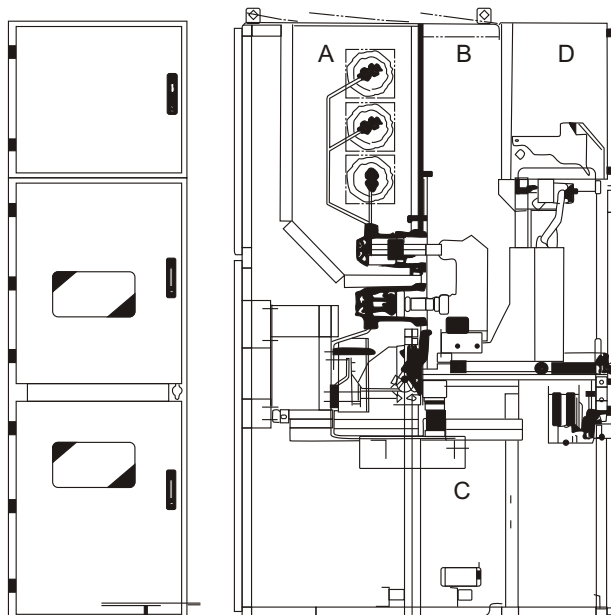
Technical specification

Item		Unit	Data
Rated voltage		kV	12
Rated frequency		Hz	50
Rated insulation level	1min power frequency withstand voltage	kV	42
	Lightning impulse withstand voltage(peak)	kV	75
Main busbar rated current		A	630,1250/1600,2000/2500,3150
Branch busbar rated current		A	630,1250,1600,2000,2500,3150
4S thermal-stable current		kA	20,25,31.5,40
Rated dynamic stable current(peak)		kA	50,63,80,100
Main circuit resistance		$\mu\Omega$	≤ 140
Protection degree			Enclosure: IP4X,Compartment: IP2X

Outline dimension

Height		mm	2250
Width	Branch busbar rated current below 1250A	mm	650
	Thermal stable current below 31.5kA		800
	Branch busbar rated current below 1600A	mm	800
	Thermal stable current below 40 kA		
	Branch busbar rated current below 1600A		
	Thermal stable current below 31.5 kA		
	Branch busbar rated current below 2000A		1000
Depth		mm	1400
Weight		kg	800~1200

Structure drawing



KYN96(AMS) Structure drawing
 A.Busbar compartment
 B.Circuit breaker compartment
 C.Cable compartment
 D.LV compartment